



# **REGIONAL PUBLIC PARTICIPATION PROJECTS**

**RP3 Advisory Group Meeting  
December 12, 2017**

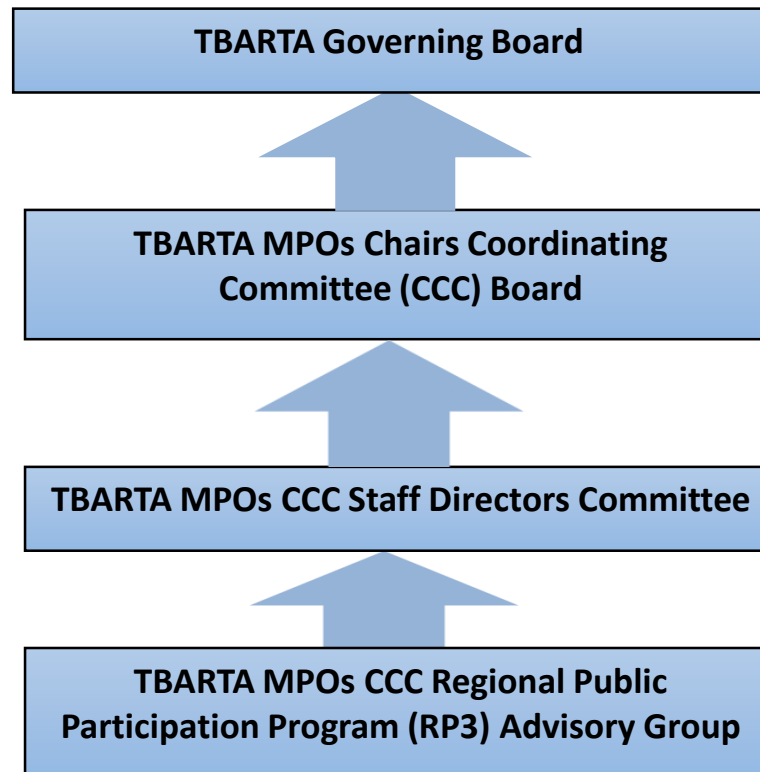


- ➔ **RP3 Advisory Group** to be a **regular, ongoing team** to continually conduct regional public involvement events
- ➔ RP3 Advisory Group *is* the regional public participation process
  - ✓ Frequent meetings and communication
  - ✓ Coordination and consolidation of outreach efforts

***Intended outcomes*** for the RP3 Advisory Group include:

- Create a single entity with all partners having *ownership* – ***the RP3 Advisory Group*** – consolidation is more efficient (and less expensive) than coordination
- Help to move from an ***attitude of competition to one of cooperation*** – competition creates unseen, but real, tension at the regional level
- Give all participants an ***equal opportunity to contribute to a meaningful regional public engagement process***
  - ✓ Bring in local knowledge and experience
  - ✓ Don't overlook community concerns
  - ✓ Strengthen engagement at all levels

## The Regional Public Participation Decision-Making Process



- Regional Long Range Transportation Plan (RLRTP)
- Regional Transit Development Plan
- Regional Coordination Structure Research
- Regional Awareness
- Expand the RP3 Advisory Group
- Dashboard

**RP3 Advisory Group** - conduct a region-wide public involvement and community engagement program for the **2045 Regional Long Range Transportation Plan (LRTP)**

**Objectives** Use the RP3 process as the primary public involvement process during development of the Regional LRTP

Focus the RP3 process on activities that support active community engagement

**Supporting Strategies** Develop a detailed methodology for engaging the public

**Outline key activities**

**Encourage informal dialog**

**Cooperatively seek funding**

- ✓ Regional planning activities
- ✓ Public outreach
- ✓ Plan revenues

**Identify market/demographic characteristics**

- ✓ Target public involvement activities within those areas
- ✓ Engage different demographic groups.
- ✓ Outreach to diverse populations

## Define the scope and area embraced by the RL RTP:

**2009** - RL RTP for six-MPO area embraced by the CCC, incorporated into the individual MPO LRTPs

**2014** - TBARTA Master Plan used as a regional long range plan

**2019** - Three-county TMA has agreed to developing a RLTP for that area (Hillsborough, Pasco, and Pinellas Counties) and attach the regional element to the MPO LRTPs

**2018/19** - TBARTA to develop a Regional TDP rather than a Master Plan

*Is there a need for a West Central Florida area (CCC) RL RTP?*

- ➔ Pinpoint key activities/actions during RL RTP development and adoption
- ➔ Regional public involvement activities should be designed to:
  - ✓ Allow prior engagement leading up to events
  - ✓ Gather public comment during meetings, workshops, etc.
  - ✓ Timely follow-up with clear communication of public comments to decision-makers



- **Identify and engage all relevant constituencies**
- **Integrate stakeholder engagement** with all proposed planning and implementation activities
- Ensure that **stakeholders have meaningful opportunities** to influence outcomes
- Conduct effective and meaningful engagement with **communities typically underrepresented** in the planning processes:
  - ✓ Low-income populations
  - ✓ Limited English proficiency
  - ✓ Minorities